

Add pop up images to V5. - this will apply to every product image on the site.

Pre-requisites

All large images to have the same name as small image with a prefix. ie productimage is called abc.jpg. Image in pop up L-abc.jpg

All large images will be displayed as a defined size in relation to the smaller image ie 2 times. 2.5 times etc.

Replace the code in ACT\_PRODUCTIMAGE with this

```
<!-- ProductImage HTML begin -->

<!-- This file is used to build the product image markup. -->
<div align="center"><IMG SRC="NETQUOTEVAR:IMAGEFILE"
    ALT="NETQUOTEVAR:ALTERNATETEXT"
    BORDER=0
    NETQUOTEVAR:IMAGEHEIGHT
    NETQUOTEVAR:IMAGEWIDTH
    NETQUOTEVAR:OTHERIMAGEMARKUP>

    <br>
    <br>
    <a href="javascript:NewWindow('L-' + 'NETQUOTEVAR:IMAGEFILE',
'NETQUOTEVAR:ALTERNATETEXT',
NETQUOTEVAR:IMAGEHEIGHT, NETQUOTEVAR:IMAGEWIDTH);">larger
image</a></div>

<!-- This file is used to build the product image markup. -->
<!-- ProductImage HTML end -->
```

Add this code to the top of ACT\_PRODUCTBODY

```
<!-- ProductBody HTML begin -->

<!-- added script -->

<SCRIPT language="JavaScript">
function NewWindow(sImageFile, sText, nHeight, nWidth)
{
    window5=window.open("", "NewPopWindow", "toolbar=no,
directories=no, menubar=no, scrollbars=no, width=" + (nWidth * 3 +
4) + ",height=" + (nHeight * 3 + 54) + ", top=90, left=0,
screenx=90, screeny=0");
    window5.document.write("<HTML><HEAD>");
    window5.document.writeln("<TITLE>" + sText + "</TITLE>");
    window5.document.writeln("</HEAD><BODY topmargin=0
leftmargin=0 marginwidth=0 marginheight=0 BGCOLOR=FFFFFF
onLoad='self.focus()'>");
    window5.document.writeln("<CENTER>");
    window5.document.writeln("<FORM><INPUT TYPE='button'
```

```

VALUE=Close onClick='window.close()'></FORM></CENTER>");
    window5.document.writeln("</BODY></HTML>");
    window5.document.close();
}

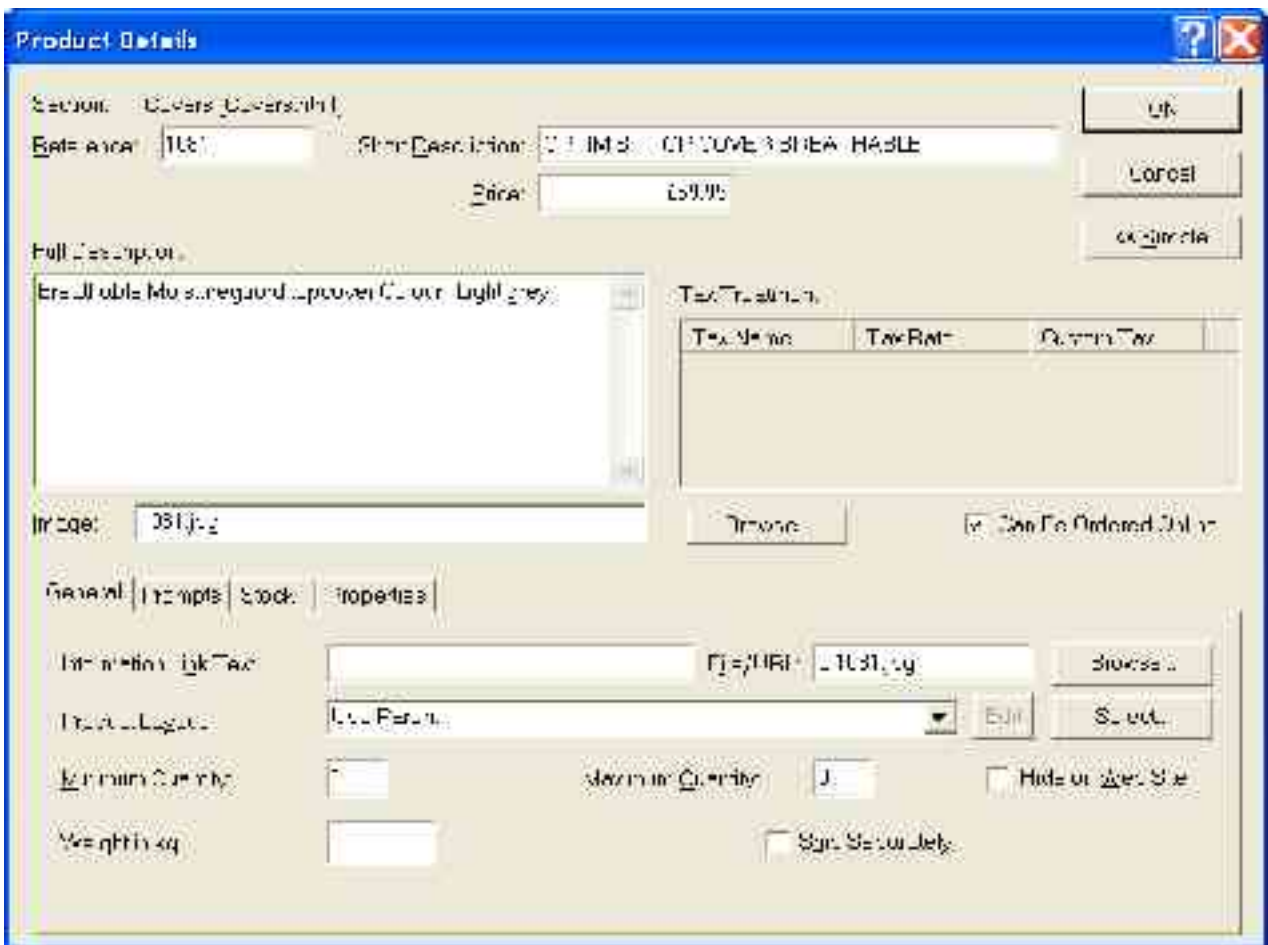
```

```
</script>
```

```
<!-- Insert HTML for the top of the product body -->
```

note that this is where you assign to width/height of the popup - width=" + (nWidth \* 3 + 4) + ",height=" + (nHeight \* 3 + 54) + ",

nWidth \* 3 (popup will be 3times the original image, plus 4 for spacing  
nHeight \* 3 (as above with 54 for close link)



In the product dialog box above "Information Link Text must have a space in it, File/URL is the large image. You may have to create a script to prepopulate this field for 2000 items.

This script can be seen working at [www.optimistonline.co.uk/acatalog](http://www.optimistonline.co.uk/acatalog)